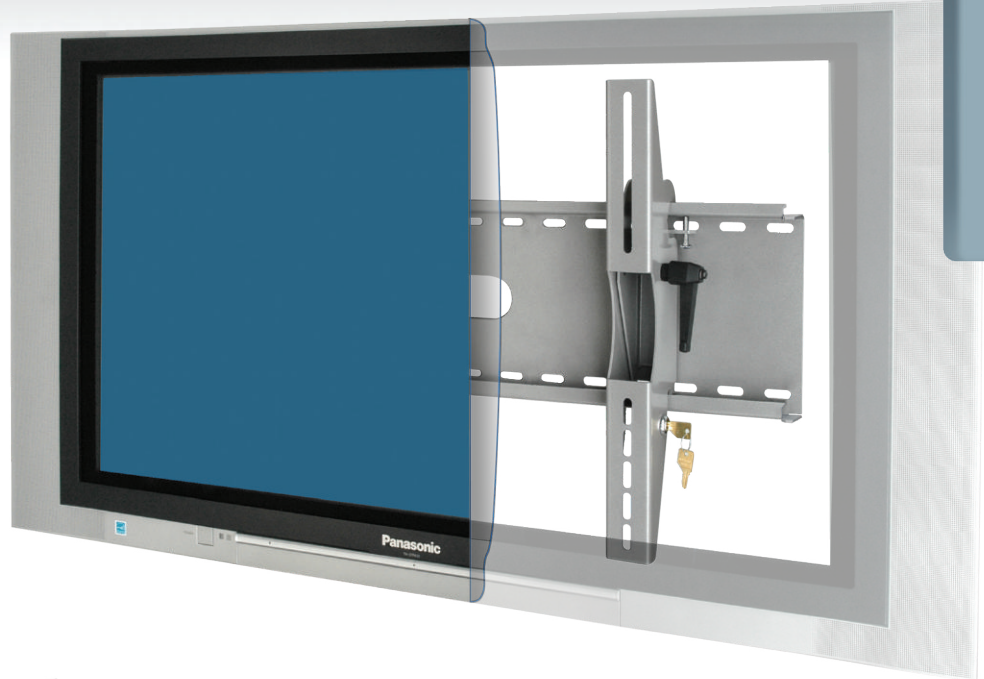


UPM-30

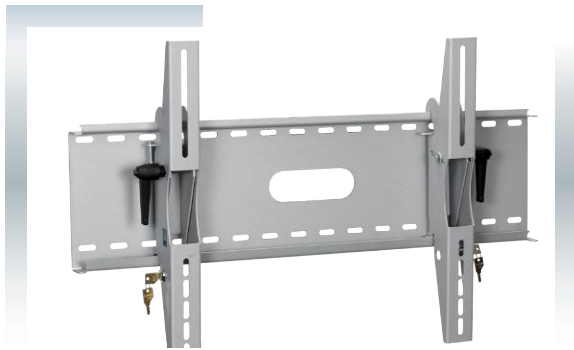
Universal Plasma & LCD Wall Bracket

CBM
design driven
manufacturing™

Security for most 30" to 60" Plasma and LCD flat panel TV's.



Audio Visual

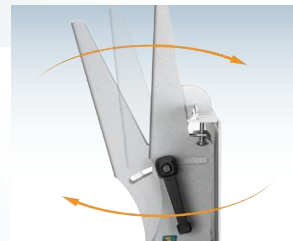


Standard Features

- Constructed with 12 gauge steel for maximum durability and stability.
- Fits most 30 to 60 inch flat panel televisions.
- +15 and -3 degree tilt with ratchet lever tightening.
- All wall mounting hardware included.
- Recommended maximum load 185 lbs.
- Flat panel and wall mounting hardware for stud and concrete included.
- Silver powder coat finish.

Options

- Colour options available in quantity.



+15 and -3 degree tilt with easy access ratchet handle.



Slot design for easy installation.



Bolt bracket to prevent lateral slides.



CBM dual key lock security locking system for optimum security.

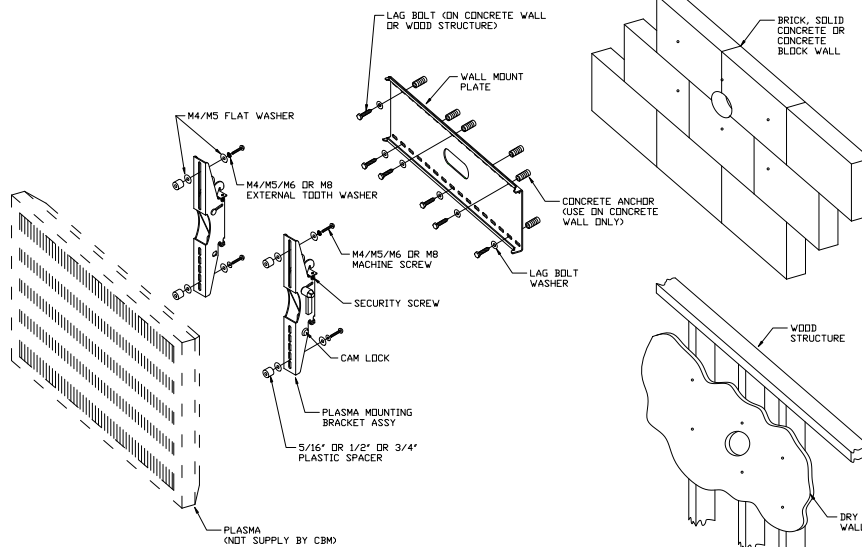


sales@cbmmetal.com • www.cbmmetal.com • 800.387.4834

UPM-30

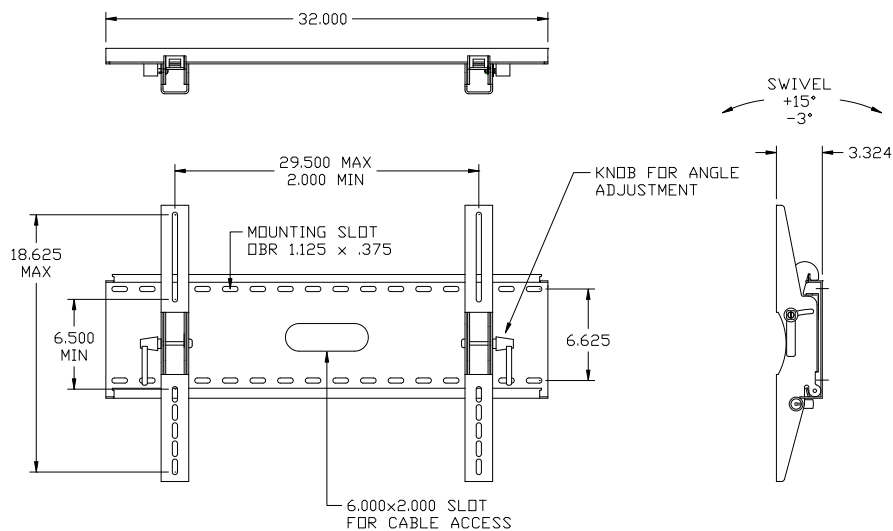
Universal Plasma & LCD Wall Bracket

Fits most 30" to 60" (76 cm to 153 cm) Plasma & LCD flat panel TV's



- 1

 - Yoke key locks into position for anti-theft.
 - Silver textured powder coat finish for optimum durability.
 - +15 and -3 degree tilt with ratchet lever tightening.



- 2

 - CBM dual key lock security locking system - cannot lift plasma from back plate when engaged.
 - Complete wall mount hardware for stud or concrete included.
 - Heavy 12 gauge back plate with cable management hole.

* 12 Month Full Satisfaction Guarantee *

CBM Ltd. guarantees its products against failure or defects for a period of one year from date of purchase. This warranty is void if any damage to the product is due to misuse, abuse, neglect, accident, improper installation, or any uses contrary to the instructions accompanying the product. The foregoing are the purchaser's exclusive remedies. CBM Ltd. assumes no liability for special or consequential damages. Replacement product may be obtained by returning the product, transportation charges prepaid, together with a receipt of purchase or other documents acknowledging the sale.

Specifications

Shipping weight: 26 Lbs (11.7 kg)

Dimensions: 32.5" L x 9.75" W x 3.32" D
(82.55 cm L x 24.8 cm W x 8.4 cm D)

Maximum load: 185 lbs (84 kg)